

<b>Meeting:</b>	<b>Safer Bromley Partnership Strategic Group</b>
<b>Date:</b>	<b>8 March 2012</b>
<b>Subject:</b>	<b>Performance Review 2011/2012</b>
<b>Author:</b>	<b>Pratheepan Jeyapragasam, Crime Analyst</b> pratheeapan.jeyapragasam@bromley.gov.uk

## 1 SUMMARY

- 1.1 This report provides an update in relation to the targets for the Safer Bromley Partnership agreed in July 2011. The report provides the latest performance monitoring data to 31 December 2011 (Quarter 3)

## 2 RECOMMENDATION

- 2.1 The Strategic Group is asked to
- Note the performance information contained within the report.

## 3 BACKGROUND INFORMATION

- 3.1 At previous meetings of the Partnership, the following Control Strategy Priorities were agreed as a means of measuring the success of the Partnership in making Bromley a safer place::

- Crimes Against Property
- Violence Against Person
- Anti-Social Behaviour
- Public Confidence

- 3.2 These priorities are reflected in the performance framework established by the Metropolitan Police and, as such, it is proposed that these four indicators form the basis of the future performance management regime for the Safer Bromley Partnership. In relation to the first two priorities, it proposed that targets be set against the indicators of reducing Violent Crime and reducing Property Crime. A summary of the “portfolio” of offences and Anti Social Behaviour that are included within these overarching targets is provided at Appendix 1. As agreed, only the following four targets are reported on at each meeting of the Strategic Group:

*Performance Indicator 1*    Reduction in Number of Violent Crimes within Bromley

*Performance Indicator 2*    Reduction in Number of Property Crimes within Bromley

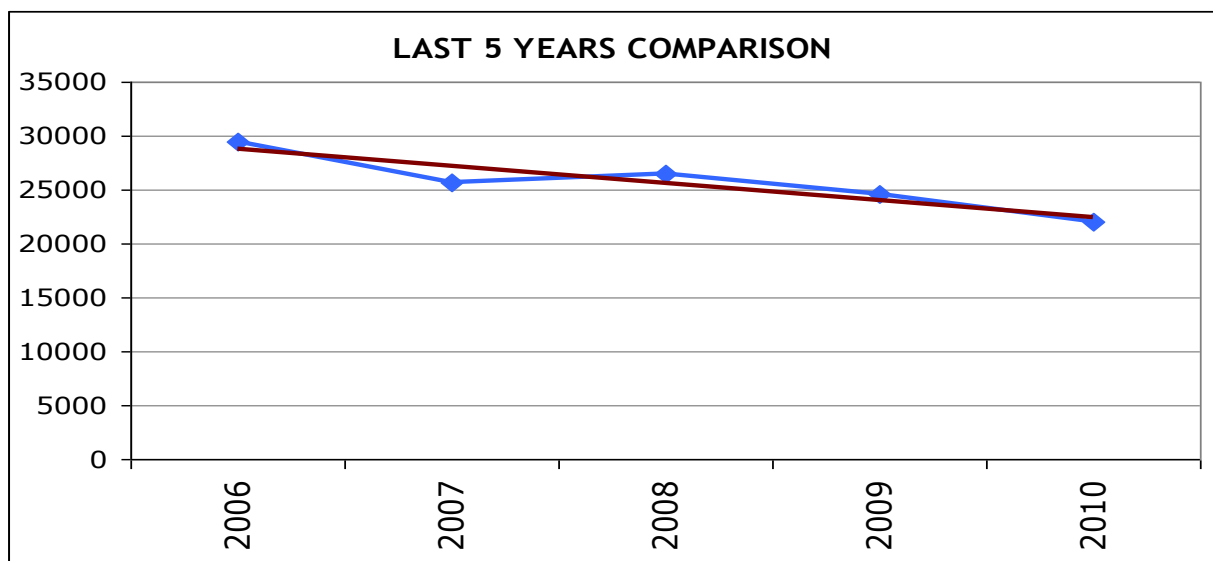
*Performance Indicator 3* Reduction in Levels of Recorded Anti Social Behaviour

*Performance Indicator 4* Increased Confidence in the Fact that Bromley is a Safe Place

Reporting on individual crime types and detail of individual operations will only be made as a routine if achievement against set targets is not being made or, in some cases, where the measurable rates of individual offences or types of offending are significantly different from expected trends and predicted patterns etc. The management of these operational level issues will be dealt with outside of the Strategic Group at the combined Police/Partnership Tactical Tasking and Coordination Group chaired by the borough Superintendent.

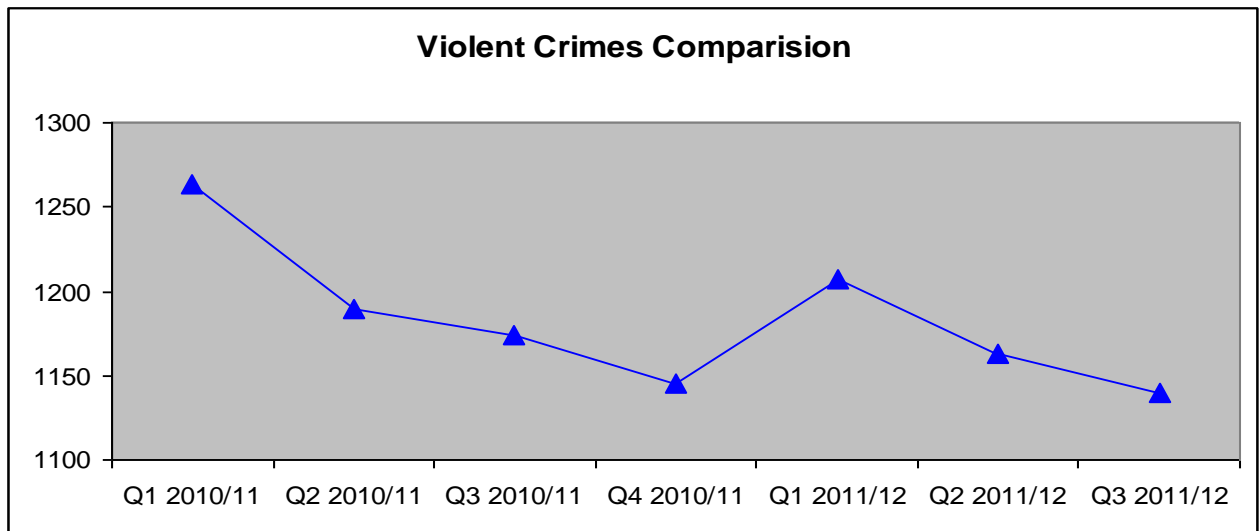
## Performance Review 2011/2012

3.3 Significant progress has been made in relation to reducing crime and disorder in Bromley. This is reflected not only in the previous year's performance figures but also over the previous five quarters and the following charts provide an indication of the trends in crime in Bromley over the past five years.



## Performance Indicator 1- Reduction in numbers of Violent crimes within Bromley

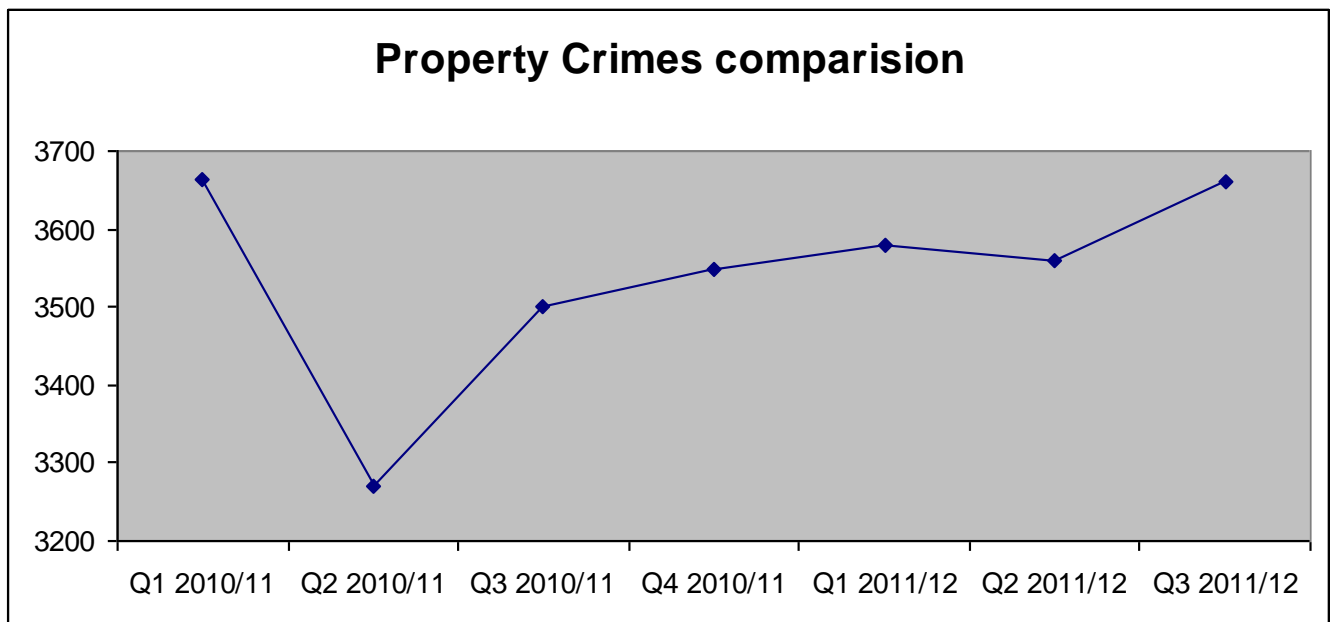
3.4 Offences related to Violent Crimes represent 21% of the Total Notifiable Offences in the period of Quarter 3 this year



3.5 During the October 2011 to December 2011 there were 1140 Total Violent Offences reported to the Police, this represented a reduction of 34(↓ 3%) offences compared with the same period previous year.

### Performance Indicator 2- Reduction in numbers of Property Crimes within Bromley

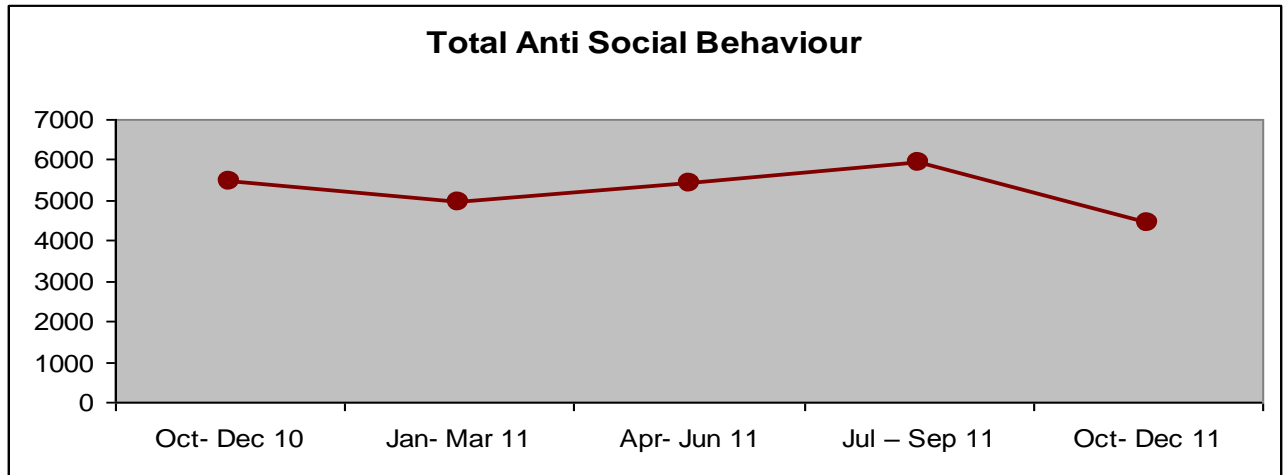
3.6 Total offences to property Crimes represent 66% of the Total Notifiable Offences in the period of Quarter 3 this year



3.7 During the October to December 2011 there were 3660 Total Property related Offences reported to the Police. This represented an increase of 160 (↑4%) offences compared

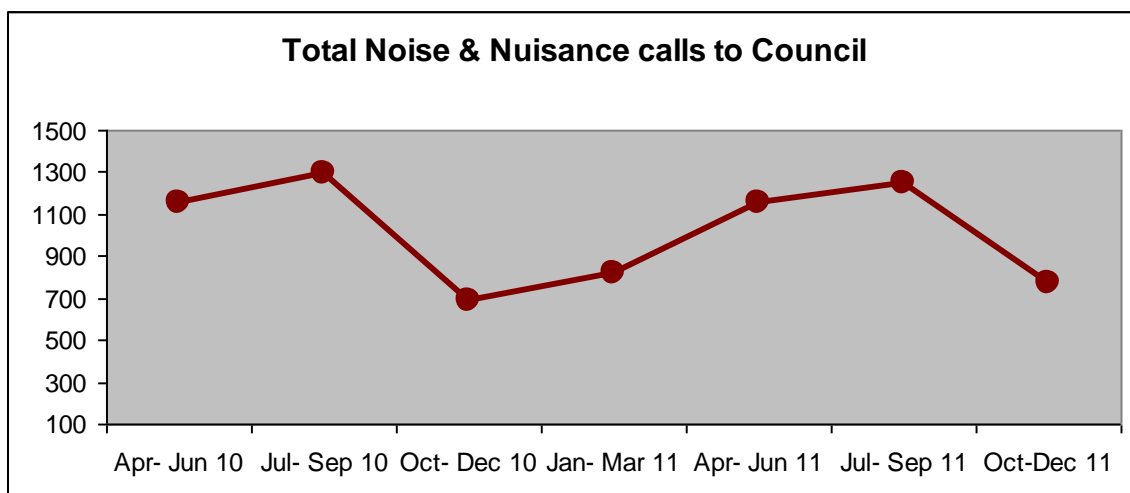
with the same period previous year. This includes an increase of 65 Burglaries, 33 Robberies and 70 Thefts which accounts for a large proportion of this increased.

## Anti-Social Behaviour

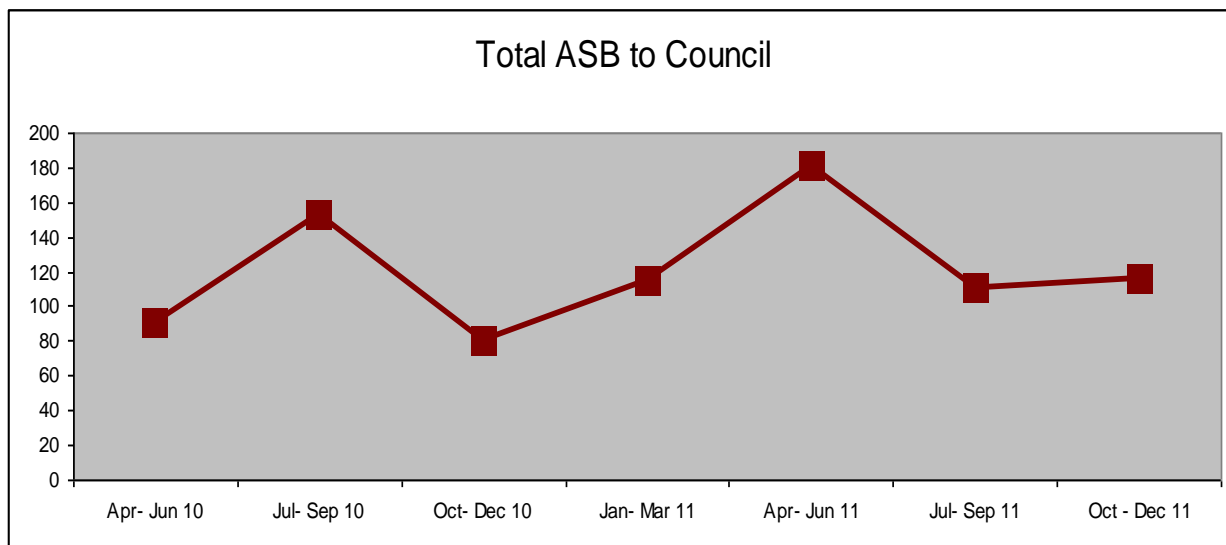


	Oct- Dec 10	Jan- Mar 11	Apr- Jun 11	Jul – Sep 11	Oct- Dec 10
Noise & Nuisance	688	818	1157	1250	772
ASB to Council	80	115	181	111	116
Fly Tipping Investigation	91	154	154	159	105
ASB to Police	3185	2584	2965	3223	2497
Graffiti	1398	1269	945	1190	961
<b>Total ABS</b>	<b>5442</b>	<b>4940</b>	<b>5402</b>	<b>5933</b>	<b>4451</b>

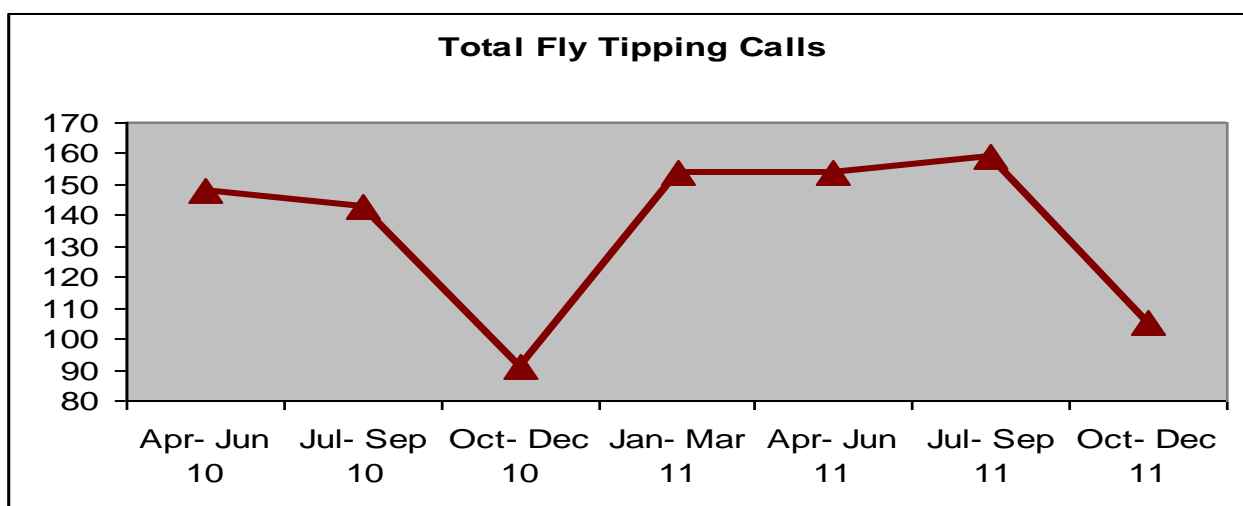
3.8 During the reporting period, the borough has experienced a reduction of 991 (22%) incidents of ASB reported when compared with the same period last year.



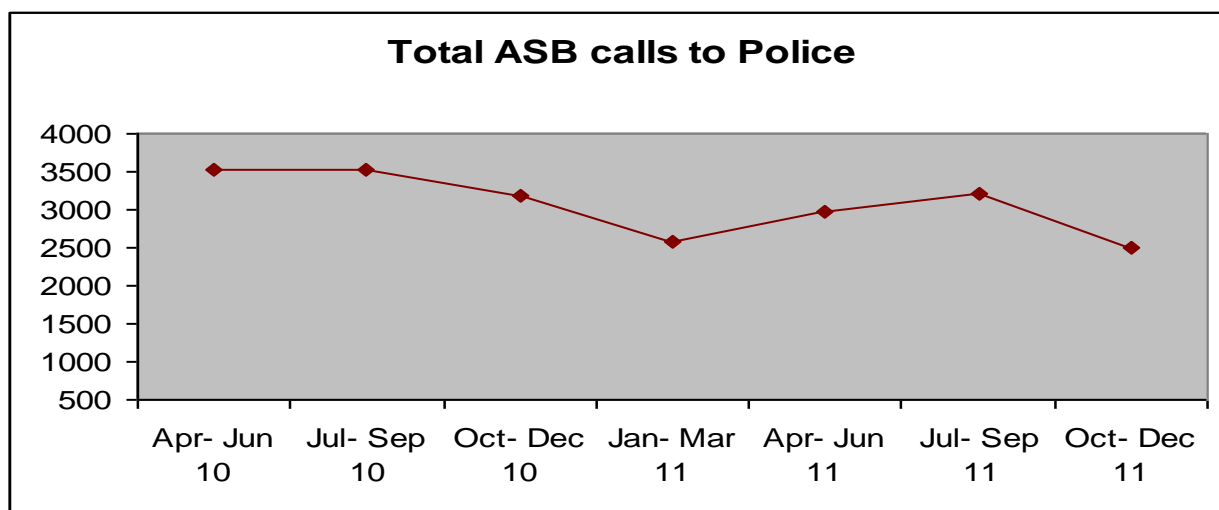
3.9 As can be seen from the figure above, during the reporting period, the borough has experienced an increase of 84 incidents of Noise and Nuisance ASB reported when compared with the same period last year.



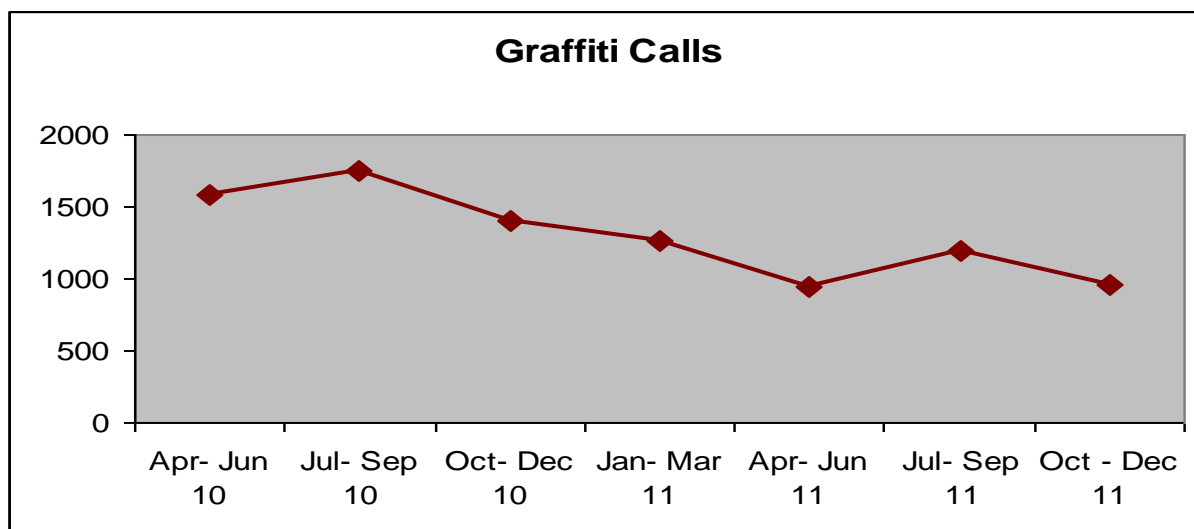
3.10 During the period July to September 2011 the borough experienced an increase of 36 incidents of ASB reported when compared with the same period last year. However, it should be noted that the Safer Bromley Partnership introduced the Matrix reporting system for ASB and this targets higher levels of anti-social behaviour and also targets the most vulnerable. This is leading to an increase in referrals from Housing Associations, Police and Local Authority. In addition the Earn Your Travel Back scheme can also contribute to an increase. As the Matrix system is adopted by more agencies then there will be an increase in referrals.



3.11 As can be seen from the figure above, during the reporting period, the borough has experienced an increase of 14 incidents of Fly Tipping ASB reported when compared with the same period last year. However, the significant trend is still focused on long term reduction of incidents.



3.12 During this reporting period there was a reduction of 688 incidents reported to police regarding ASB compared with the same period last year.



3.13 As can be seen from the figure above, during the reporting period, the borough has experienced a reduction of 437 incidents of Graffiti reported when compared with the same period last year. This could be for a number of reasons, increase community engagement, street friends taking a stronger role in the community etc.

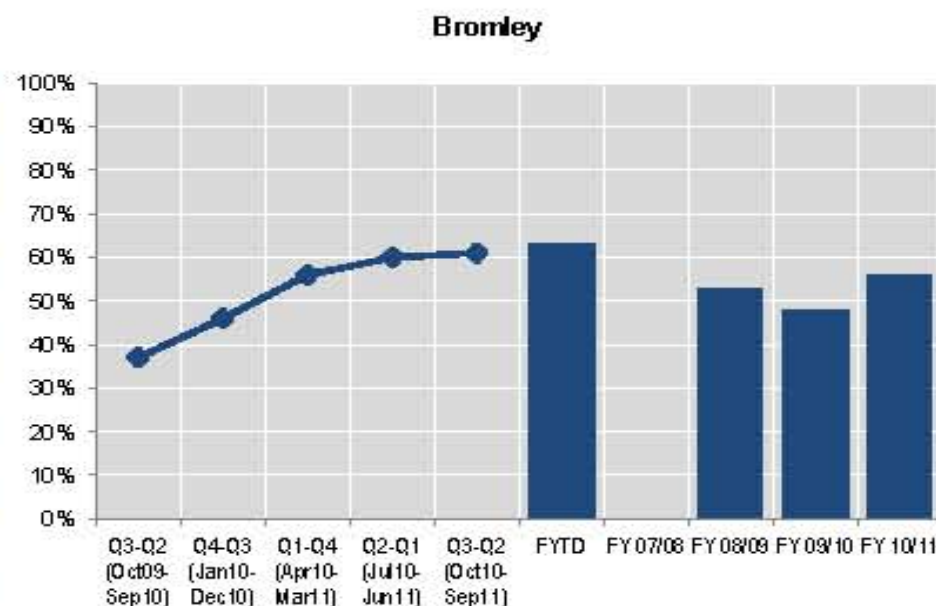
## Increased confidence in the fact that Bromley is a safe place

**Q74AB: To what extent do you agree that the police and local council are dealing with the ASB and crime issues that matter in this area? Base: all respondents**

Difference from previous quarter  
[Borough]: +1%

Difference from same quarter in 2011/12  
[Borough]: +24%

% agree (strongly/tend to)	Bromley			MPS
	%	Base	Confidence interval	%
Q3-Q2 (Oct09-Sep10)	37%	640	±3.74%	49%
Q4-Q3 (Jan10-Dec10)	46%	640	±3.86%	50%
Q1-Q4 (Apr10-Mar11)	56%	640	±3.85%	51%
Q2-Q1 (Jul10-Jun11)	60%	581	±3.98%	51%
Q3-Q2 (Oct10-Sep11)	61%	521	±4.19%	52%
Financial Year to Date	63%	201	±6.67%	52%
FY 07/08	NA	0	NA	NA
FY 08/09	53%	640	±3.87%	52%
FY 09/10	48%	640	±3.87%	46%
FY 10/11	56%	640	±3.85%	51%





## Promoting public safety: Proxy SPI10b Perceptions of ASB

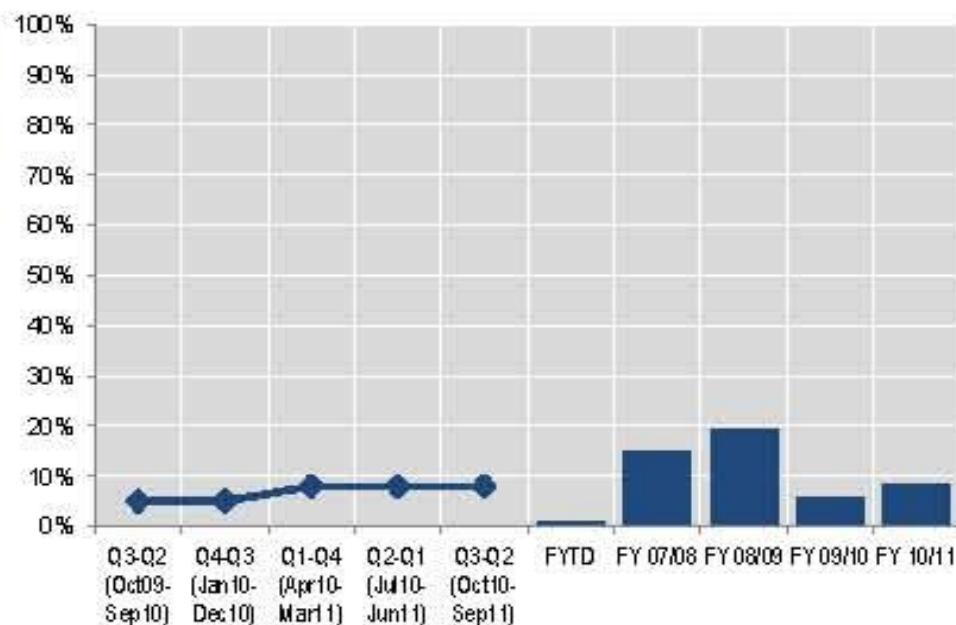
Q10A-G [composite]: Perceptions of ASB Base: all respondents, excluding those indicating 'don't know' to any of the seven composite factors

Difference from previous quarter [Borough]: ±0%

Difference from same quarter in 2011/12 [Borough] +3%

% high level of worry	Bromley			MPS
	%	Base	Confidence interval	%
Q3-Q2 (Oct09-Sep10)	5%	473	±1.96%	12%
Q4-Q3 (Jan10-Dec10)	5%	497	±1.92%	12%
Q1-Q4 (Apr10-Mar11)	8%	551	±2.27%	12%
Q2-Q1 (Jul10-Jun11)	8%	525	±2.32%	11%
Q3-Q2 (Oct10-Sep11)	8%	479	±2.43%	11%
Financial Year to Date	1%	186	±1.43%	10%
FY 07/08	15%	489	±3.15%	18%
FY 08/09	19%	505	±3.44%	23%
FY 09/10	5%	488	±2.02%	13%
FY 10/11	8%	551	±2.29%	12%

Bromley





## Q15: To what extent are you worried about ASB in the area?

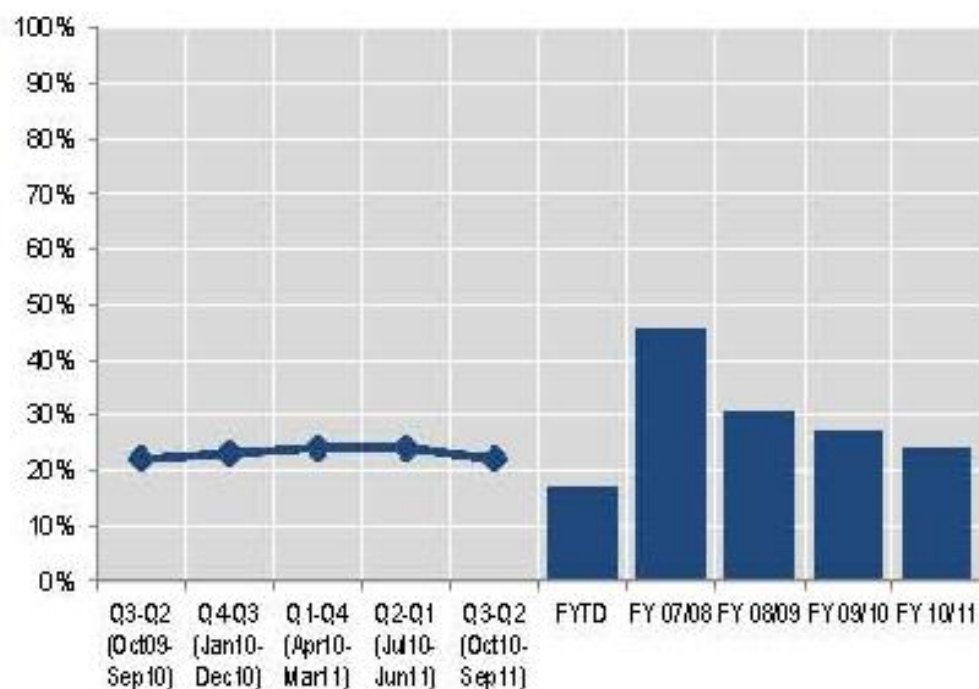
Base: all respondents, excluding 'don't know'

Difference from  
previous quarter  
[Borough]: -2%

Difference from same  
quarter in 2011/12  
[Borough] ±0%

% worried (very/fairly)	Bromley			MPS
	%	Base	Confidence interval	%
Q3-Q2 (Oct09-Sep10)	22%	638	±3.21%	25%
Q4-Q3 (Jan10-Dec10)	23%	638	±3.27%	25%
Q1-Q4 (Apr10-Mar11)	24%	638	±3.31%	25%
Q2-Q1 (Jul10-Jun11)	24%	581	±3.47%	26%
Q3-Q2 (Oct10-Sep11)	22%	520	±3.56%	25%
Financial Year to Date	17%	200	±5.21%	27%
FY 07/08	45%	639	±3.86%	40%
FY 08/09	31%	634	±3.59%	39%
FY 09/10	27%	640	±3.43%	25%
FY 10/11	24%	638	±3.32%	25%

Bromley



## APPENDIX 1

### Performance Indicator Portfolios:

<b>Violence Portfolio</b>	
<b>Offences</b>	<b>Supporting Measures</b>
Violence with Injury	Domestic Violence
Common Assault	Domestic Violence Sanction Detection Rate
Harassment	Domestic Violence Arrest Rate
Threats/ Conspiracy to Kill	Serious Youth Violence
Blackmail	Knife Enabled Crime
Kidnapping/ False Imprisonment	Knife Enabled Crime Sanctioned Det. Rate
	Gun Crime
	Gun Crime Sanctioned Det. Rate
	Most Serious Violence
	Most Serious Violence Sanctioned Det. Rate

<b>Property Portfolio</b>
<b>Offences:</b>
Personal Robbery
Commercial Robbery
Total Robbery
Residential Burglary
Non-Residential Burglary
Theft/Taking Motor Vehicles
Theft From Motor Vehicles
Theft From Shops
Theft From Person
Theft of Pedal Cycles
Other Theft
Criminal Damage

<b>Anti Social Behaviour Portfolio</b>
<b>ASB:</b>
Noise & Nuisance
ASB to Council
Fly Tipping
ASB to Police
Graffiti